



PROGRAM 2022 SYMPOSIUM

New Socioeconomic
Development Strategies
for, by, and with
First Nations

A COLLABORATION WITH



Cercle des partenaires
Chaire de leadership en enseignement (cle)
en foresterie autochtone

COMMISSION DE
DÉVELOPPEMENT DES
RESSOURCES PREMIÈRES NATIONS
DU QUÉBEC



FIRST NATIONS
HUMAN RESOURCES
DEVELOPMENT COMMISSION
OF QUEBEC



COMMISSION DE DÉVELOPPEMENT ÉCONOMIQUE DES
PREMIÈRES NATIONS DU QUÉBEC ET DU LABRADOR
FIRST NATIONS OF QUEBEC AND LABRADOR ECONOMIC
DEVELOPMENT COMMISSION



CIÉRA
Centre interuniversitaire d'études
et de recherches autochtones

cef
Centre d'étude de la forêt

WITH THE SUPPORT OF

Secrétariat
aux relations avec
les Premières Nations
et les Inuits
Québec



Conseil de recherches en
sciences humaines du Canada

Social Sciences and Humanities
Research Council of Canada

Faculté de foresterie,
de géographie
et de géomatique



UNIVERSITÉ
LAVAL

Main activities • See **A** Map 1

DATE & LOCATION

Thursday, November 10, 2022

Symposium

Auditorium Roland-Arpin (discussions and panels)

Museum cafeteria (lunch)

Grand Hall (networking activities)

Musée de la Civilisation

85, rue Dalhousie • Québec, QC G1K 8R2

Cultural evening

Grand hall

Musée de la Civilisation

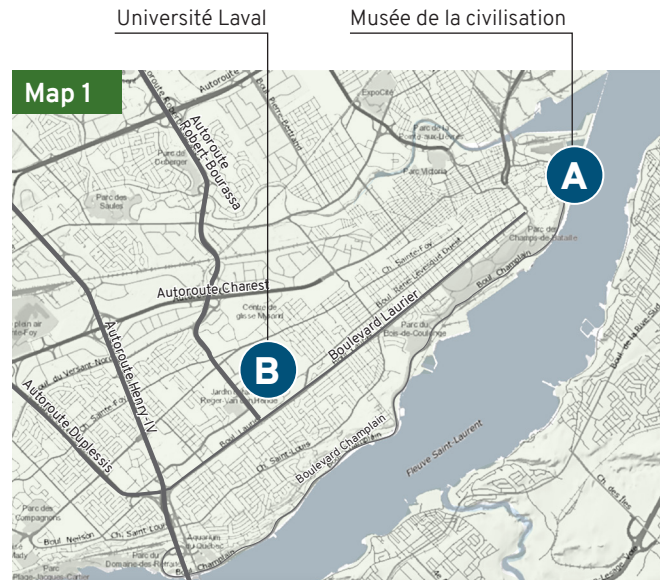
85, rue Dalhousie • Québec, QC G1K 8R2

INFORMATION AND REGISTRATION

www.foresterieautochtone.ulaval.ca/colloque-2022

Contact : CLE-Foresterie-autochtone@sbf.ulaval.ca

Organization : audrey.vezina-lavergne.1@ulaval.ca



Related activities • See **B** Map 1

DATE & LOCATION

Le mercredi 9 novembre 2022

Circle of Partners

See **1** Map 2

Reserved for Chair of Educational Leadership in Indigenous Forestry partners and collaborators

Salle Gilbert-Tardif, local GHK-2320-2330

Université Laval • Pavillon Gene-H. -Kruger

2405, rue de la Terrasse • Québec, QC G1V 0A6

Training session

See **2** Map 2

«Mamu, Ensemble vers la réconciliAction! »

Reserved for Indigenous workplace development liaison officers

La Centrale - Espace entrepreneurial, local POL-1250

Université Laval • Pavillon Maurice-Pollack

2325, rue de l'Université • Québec, QC G1V 0A6



Program • November 10th • Before noon

08:00 Welcoming of participants, networking, and breakfast

08:30 Opening ceremony by
Michel Teharihulen Savard

08:45 Introductory remarks

Michèle Audette

Vice-Rector of Academic and Student Affairs and Senior Advisor for Reconciliation and Indigenous Education, Université Laval.

Ian Lafrenière

Minister Responsible for Relations with the First Nations and the Inuit. Deputy of Vachon.

Richard Jalbert

Executive Director at the First Nations Human Resources Development Commission of Quebec (FNHRDCQ).

Mickel Robertson

Director General at the First Nations of Quebec and Labrador Economic Development Commission (FNQLEDC).

9:15 Luminary: Advancing Indigenous Innovation for Economic Transformation, Employment and Wellbeing [in English]

Kelly Lendsay

President & CEO, Indigenous Works; Founder & CEO, Luminary.

09:45 NETWORKING & COFFEE BREAK

10:15 Panel - Recruitment and retention of the Indigenous Workforce
[in French]

Hosted by Wanda Lafontaine (Support and Partnership Coordinator, FNHRDCQ) and Marie-Ève Dufour (professor, Université Laval).

Lara Sioui

Executive Director, Econobois; Entrepreneur and Founder, Onquata.

Mathieu Boucher

Director - Indigenous Affairs, Hydro-Québec.

Dominic Pagé

Human Resources Director, SOPFEU (Société de protection des forêts contre le feu).

11:15 Entrepreneurship: A Co-generated Approach [in English]

Rick Colbourne

Associate Dean Equity and Inclusive Communities. Assistant Professor, Indigenous Leadership and Management, Sprott School of Business, Carleton University.

Irene Henriques

Professor of Sustainability & Economics, Schulich Research Excellence Fellow, Schulich School of Business, York University.

Peter Moroz

Professor of Entrepreneurship, Hill and Levene Schools of Business, University of Regina.

Robert Anderson (online)

Professeur Emeritus, University of Regina.

12:00 LUNCH & NETWORKING

Program • November 10th • Afternoon

13:30 **Projet Wapistan : savoir autochtone, savoir scientifique et mobilisation des jeunes cris**
[in French and in English]

Eliane Grant

Forest Biologist, Natural Resources Department at Cree First Nation of Waswanipi.

Ian Saganash

Land keeper.

14:00 **Progressive Aboriginal Relations (PAR) Certification** [in English]

Tabatha Bull

President & CEO, Canadian Council for Aboriginal Business.

14:30 **Mesgi'gUgju's'n Wind Farm Project**
[en anglais]

Kirt Dedam

Project Manager, Mi'gmawei Mawiomi Business Corporation.

Fred Vicaire

Chief Executive Officer, Mi'gmawei Mawiomi Business Corporation.

15:00 **NETWORKING & COFFEE BREAK**

15:30 **Forestry partnership panel, hosted by Alexandre Bacon (President and CEO, Institut Ashukan)**
[in French]

Geneviève Labrecque

Chief Forester, Quebec, GreenFirst Forest Products.

Dave Lepage

Corporate Director, Forestry and Procurement, Chantiers Chibougamau.

Adam Jourdain

Directeur-général adjoint, Conseil des Atikamekw de Wemotaci.

16:30 **Best recruitment, integration, and retention practices toolbox for the Indigenous workforce**

[in French]

Flavie Ferrer

Forestry project coordinator, First Nations of Quebec and Labrador Sustainable Development Institute.

Joanie Caron

Professor, Université du Québec en Abitibi-Témiscamingue.

Hugo Asselin

Professor, Université du Québec en Abitibi-Témiscamingue.

17:00 **Documentary *Akumunan: un voyage au cœur du Nitassinan d'Essipit***
[in French]

Hosted by Louis Bélanger (professor, Faculté de foresterie, de géographie et de géomatique).

Ulysse Rémillard

Research officer for the environment, territory, and traditional activities, Conseil de la Première Nation des Innus Essipit.

17:45 **Closing remarks**

Robert Beauregard

Full professor, former Executive Vice Rector and Vice-Rector of Academic and Student Affairs, Université Laval.

Alexandre Bacon

President and CEO, Institut Ashukan.

Richard Jalbert

Executive Director at the First Nations Human Resources Development Commission of Quebec (FNHRDCQ).

18:00 **NETWORKING, COCKTAIL RECEPTION, BOOTHS, AND "This Is Our Story: First Nations and Inuit in the 21st Century" EXHIBIT**

Program for the Cultural Evening



Beatrice Deer



Eadsé



Mike Paul

19:30 Beatrice Deer Duo feat. Chris McCarron

20:15 Fifteen-minute break

20:30 Eadsé solo performance (piano, voice, drum, and instrumental pieces)

21:00 Fifteen-minute break

21:15 Mike Paul group jam

22:00 End of cultural evening



The annual symposium of Université Laval's Chaire de leadership en enseignement en foresterie autochtone highlights the numerous benefits stemming from collaboration between forest industry stakeholders and the Indigenous communities. It also affords students an opportunity to apply innovative ideas for advances both in the field of forestry and in the development of sustainable prosperity for Québec, while fostering mutual respect and understanding and more harmonious cohabitation.

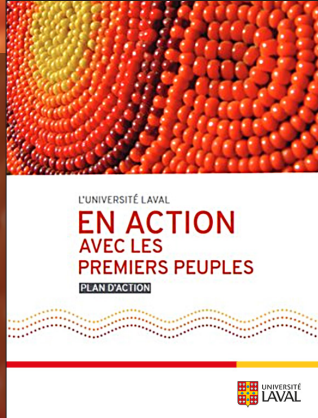
As the Premier noted when he announced the Cabinet, each one of us is responsible for improving our relations with the First Nations and the Inuit.

It is my hope that by increasing initiatives such as this one we can jointly ensure that the integration of Indigenous realities into the professional and research communities will become widespread in Québec.

Continue to set an example.


**Best wishes to each and every one of you
for a successful symposium.**

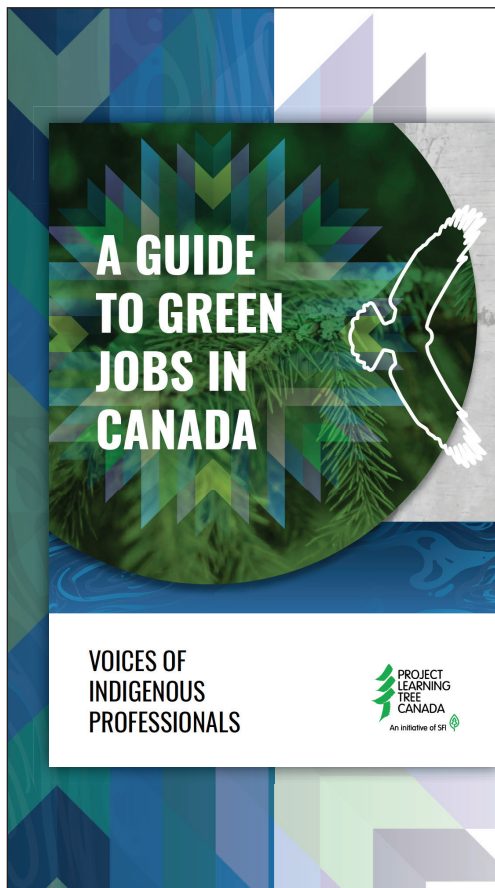
Ian Lafrenière
Member for Vachon



Afin de répondre à l'appel à l'action de la Commission de vérité et réconciliation du Canada en appui à la formation des étudiants des Premières Nations et Inuit, notre université a adopté le plan En action avec les premiers peuple. Ce document met en valeur des principes et des moyens concrets afin que la réconciliation espérée ne reste pas que de simple mot, mais qu'elle se traduise au quotidien dans nos actions avec les Premiers Peuples. Une équipe a été embauché issu des premiers peuples pour veiller à la réalisation des différentes initiatives. Un accompagnement spécifique aux besoins et aux réalités des étudiants premiers peuples se fera durant leur parcours universitaire. L'équipe sera également en charge de développer des relations avec les communautés et des organismes partenaires issus des premiers peuples et supervisera certains programmes et activités afin de faire refléter la réalité des autochtones.

 www.ulaval.ca/premiers-peuples

 www.ulaval.ca/sites/default/files/notre-universite/direction-gouvernance/bsg/documents-officiels/directives-procedures/plan-action-premiers-peuples.pdf



ORDER YOUR FREE COPIES NOW!

AVAILABLE IN FRENCH, ENGLISH, ANISHINAABEMOWEN, AND PLAINS CREE

Features 12 first-person stories from Indigenous professionals in the forest, conservation, and parks sectors, plus 12 career fact sheets with job descriptions, education requirements, and salary info.

ORDER NOW : PLTCANADA.ORG



Funded in part by the Government of Canada under the Youth Employment and Skills Strategy





Cercle des partenaires
Chaire de leadership en enseignement (cle)
en foresterie autochtone

COMMISSION DE
DÉVELOPPEMENT DES
RESSOURCES HUMAINES DES
PREMIÈRES NATIONS
DU QUÉBEC



FIRST NATIONS
HUMAN RESOURCES
DEVELOPMENT COMMISSION
OF QUEBEC



COMMISSION DE DÉVELOPPEMENT ÉCONOMIQUE DES
PREMIÈRES NATIONS DU QUÉBEC ET DU LABRADOR
FIRST NATIONS OF QUEBEC AND LABRADOR ECONOMIC
DEVELOPMENT COMMISSION



WE THANK ALL OUR PARTNERS:

Platinum Partner

**Secrétariat
aux relations avec
les Premières Nations
et les Inuit**

Québec



First Nations Partners



Gold Partner



UNIVERSITÉ
LAVAL

Faculté de foresterie,
de géographie
et de géomatique

Faculté des sciences
de l'administration
Département de management

Centre de recherche en gestion,
développement des personnes et
des organisations (CerG-DPO)



Silver Partner



APLA est une initiative de SFI



Bronze Partners



Partenaires



Funding organization



Conseil de recherches en
sciences humaines du Canada

Social Sciences and Humanities
Research Council of Canada