

# Contribution to the Atikamekw community of Wemontaci's integrated forest management plan

Élisabeth Petitclerc  
November 15<sup>th</sup> 2023



**Cercle des partenaires**  
Chaire de leadership en enseignement (cle)  
en foresterie autochtone



# The Atikamekw Nation

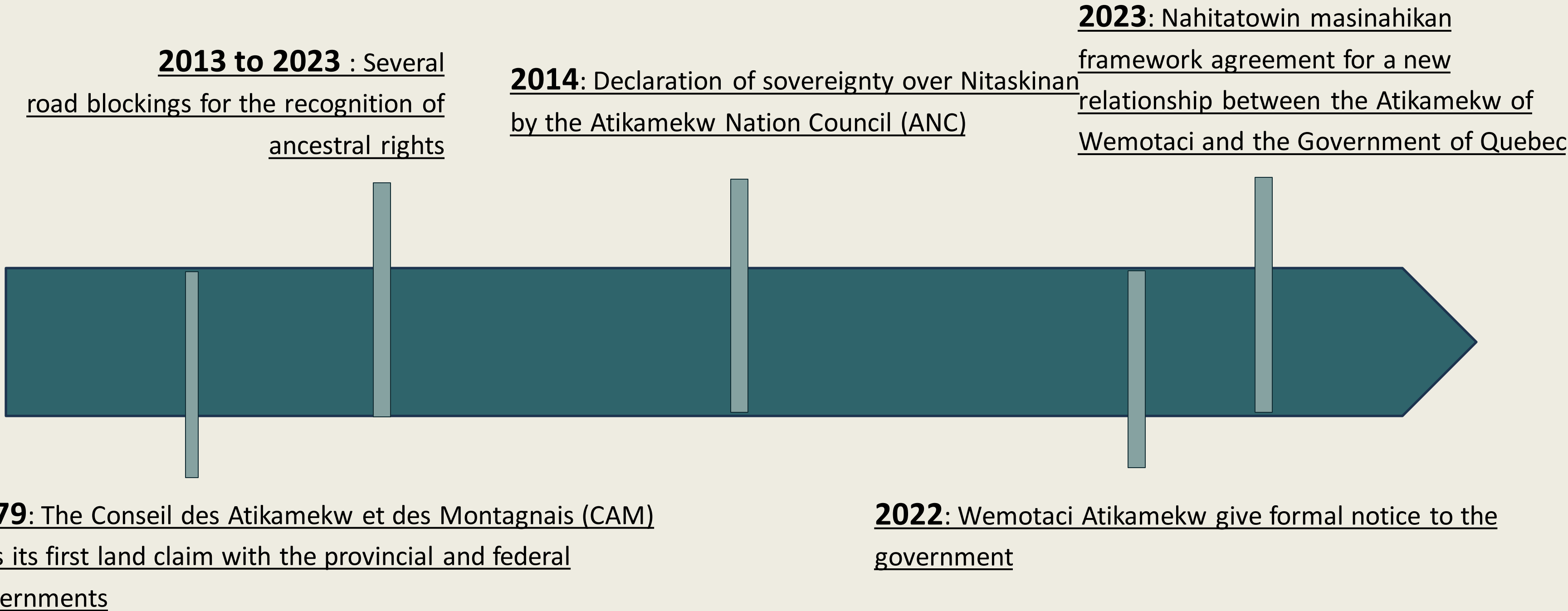
- Over 8 000 members
- High use of their traditional language (Nehirowimowin)
- Identity strongly rooted in the traditional territory known as Nitaskinan

## The Atikamekw community of Wemotaci

- Haute-Mauricie, 115 km North of La Tuque
- Wemotaci family lands (Wemotaci Aski) represent just over 1,500,000 ha.



# The Atikamekw of Wemotaci's quest for leadership in the forestry of the Nitaskinan





# Activities on its unceded ancestral territory

**According to the Conseil des Atikamekw de Wemotaci (CAW), the implementation of Quebec's forestry regime...:**

- Violates duty to consult and accommodate
- Is a threat to the Atikamekw way of life
- Hinders the exercise of ancestral rights
- Unconstitutional

"From our point of view, the current consultations are superficial, the accommodations derisory, the cumulative effects are never taken into consideration and the measures for conserving the territory are insufficient."

François Néashit, Precedent chief of the CAW



Wemotaci gives formal notice to the Quebec government



# Nahitatowin Masinahikan Framework Agreement between the Atikamekw of Wemotaci and Quebec Concerning Territory and Forest Resources

## Article 8

"The government is authorized to enter into agreements with any aboriginal community represented by its band council to facilitate the exercise and monitoring of forest management activities by community members and to support sustainable forest management."

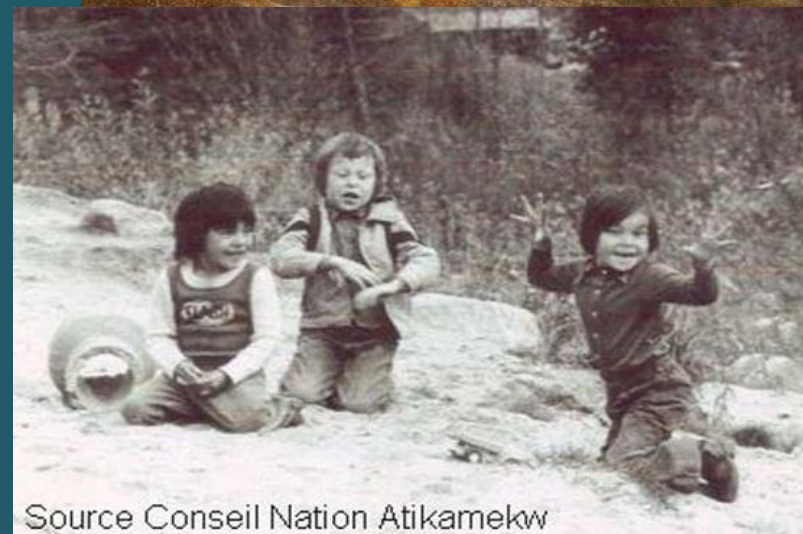
L.R.Q., 2010, c. A-18.1 art. 8

### Informations on the framework agreement:

- 3 years
- Paves the way for the signing of a collaboration agreement
- Protection, management and enhancement

### One of the topics:

- Continuing the development and promoting the implementation of the Integrated Land Use Plan for the Atikamekw de Wemotaci (PAITAW)



Source Conseil Nation Atikamekw

# How can we ensure that the interests, values and needs of the Wemotaci Atikamekw are taken into account in forestry planning in Quebec?

## Targets

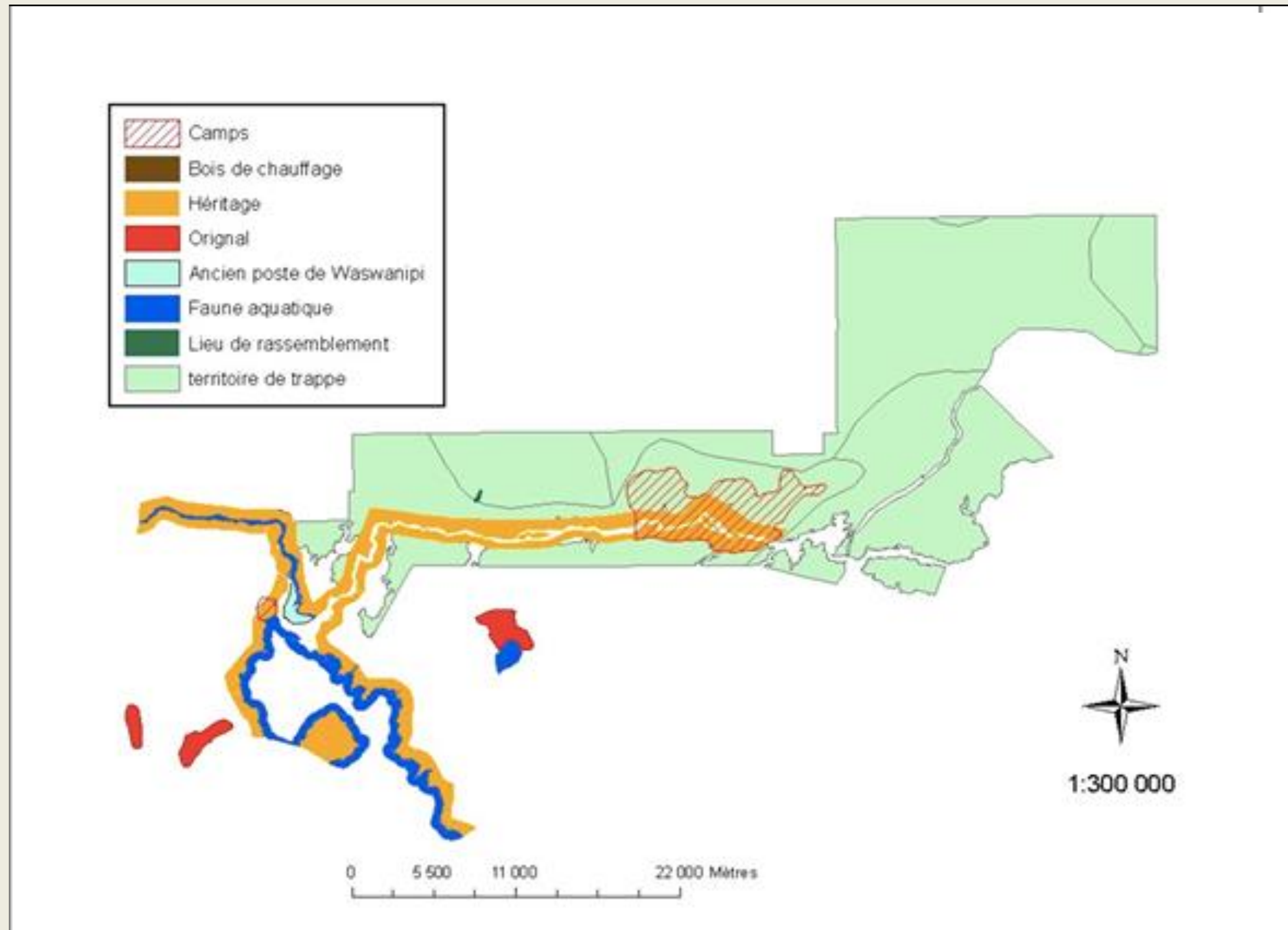
01

Identifying forest planning issues for the Atikamekw of Wemotaci

02

Propose culturally appropriate harvesting scenarios

# Methodology: Preliminary idea



Lavazorici, 2011

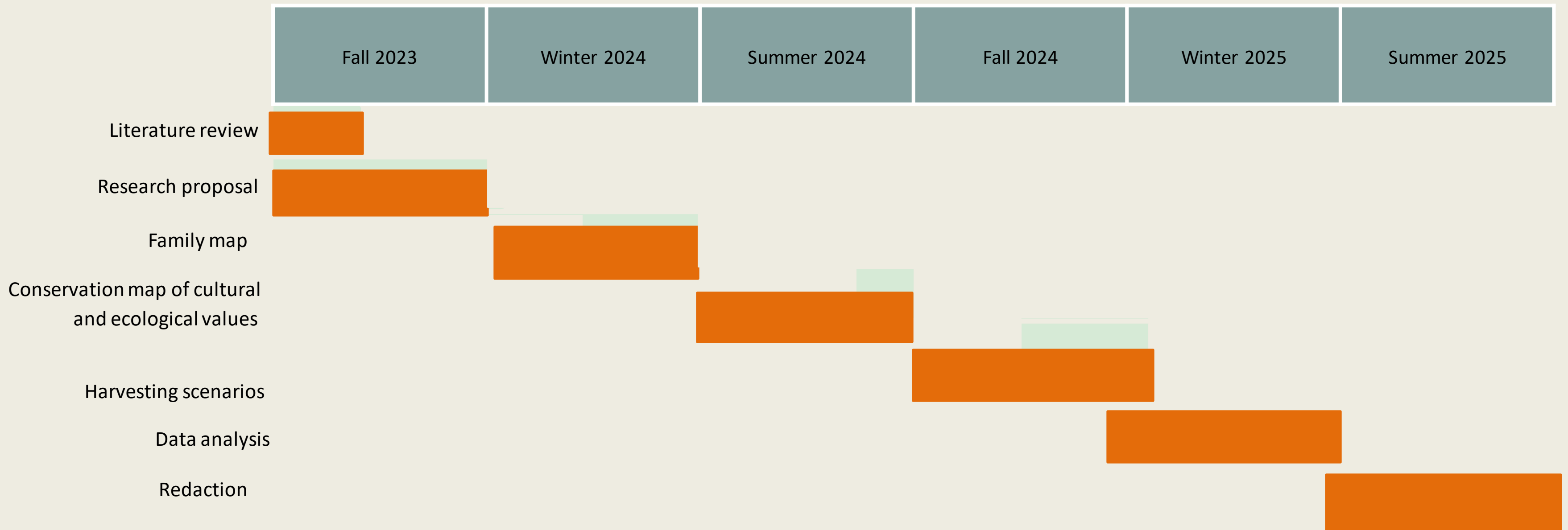
## Research strategy

- Mixed case study method
- Collaborative approach

## Data collection

- Participatory mapping (objective 1)  
Results:
  - Family map (1)
  - Conservation map - cultural and ecological values (2)
- Working groups with the families (objective 2)  
Results:
  - Harvesting scenarios (3)

# Calendar





# Economic benefits



Canva, 2023

- Development of concrete tools that can be easily used by Wemotaci
- Protection of Atikamekw cultural and traditional values
- Sustainable forest planning
- Valorization of Atikamekw's land use
- Economic benefits for the community
- A better understanding of strategies to encourage Aboriginal participation in forest management and economic development

# Acknowledgements



Conseil des  
Atikamekw de  
Wemotaci

Chaire de  
leadership en  
enseignement en  
foresterie  
autochtone

Jean-Michel  
Beaudoin:  
Research directors

Mathieu  
Bouchard:  
Research co-  
director

Louis  
Bélanger: Collaborator  
and advisor

Pauline Suffice:  
Research  
professional



# Thank you!

Élisabeth Petitclerc

✉ [elisabeth.petitclerc.1@ulaval.ca](mailto:elisabeth.petitclerc.1@ulaval.ca)



# Bibliography

- Bernard, A. and N. Gélinas (2020). "Assessment of a Public Participation Tool by Experts: A Case Study of Quebec, Canada." Natural Resources **11**(07): 283-306.
- Bureau du forestier en chef. 2018. Planification forestière. Fascicule 1.1. Manuel de détermination des possibilités forestières 2018-2023. Gouvernement du Québec, Roberval, Qc, 6 p.
- Conseil de la Nation Atikamekw [CNA]. (s. d.) Consulté le 10 octobre 2023, à l'adresse: <https://atikamekw.sipi.com/fr/la-nation-atikamekw/fondements/demographie>
- Conseil des Atikamekw de Wemotaci [CAW]. (s. d.) Histoire de la communauté. Consulté le 10 octobre 2023, à l'adresse: <https://wemotaci.com/la-communaute/#history>
- Ethier, B., Cocoo, C. et Ottawa, G. (2019). Orocowewin notcimik itatcihowin: The Atikamekw Nehirowisiw code of practice and the issues involved in its writing. *Potchefstroom Electronic Law Journal*, 22(1), 1-25. <http://dx.doi.org/10.17159/1727-3781/2019/v22i1a7593>
- Jacqmain, H., et al. (2006) Valoriser les savoirs des Cris de Waswanipi sur l'original pour améliorer l'aménagement forestier de leurs territoires de chasse
- Lazarovici, M., (2011). PROPOSITION D'UNE MÉTHODOLOGIE POUR PRÉPARER ET ANALYSER DES SCÉNARIOS D'AMÉNAGEMENT FORESTIER SUR LE TERRITOIRE CRI DE WASWANIPI. Québec, Université Laval.
- Loi sur l'aménagement durable du territoire forestier. *L.R.Q.*, (2010)
- Wyatt, S. (2006). "« Si les autres le font, pourquoi pas nous ? »." Recherches amérindiennes au Québec **36**(2-3).
- Wyatt. S., (2008). First Nations, forest lands and «aboriginal forestry » in Canada: From exclusion to comanagement and beyond. *Canadian Journal of Forest Research*, 38(2), 171-180. <https://doi.org/10.1139/X07-214>