



La Table des partenaires

Chaire de leadership en enseignement (cle) en foresterie autochtone
Educational Leadership Chair (elc) in Indigenous Forestry

Setting Up Indigenous Protected Areas: Case Study of Akumunan Biodiversity

Ongoing Project

Champagne-Côté R.¹, Beaudoin JM.¹, Bélanger L.¹, Suffice P.¹,
St-Onge M.², Goulet K.² et Asselin H.³

1



UNIVERSITÉ
LAVAL

2



3



June 2nd, 2021

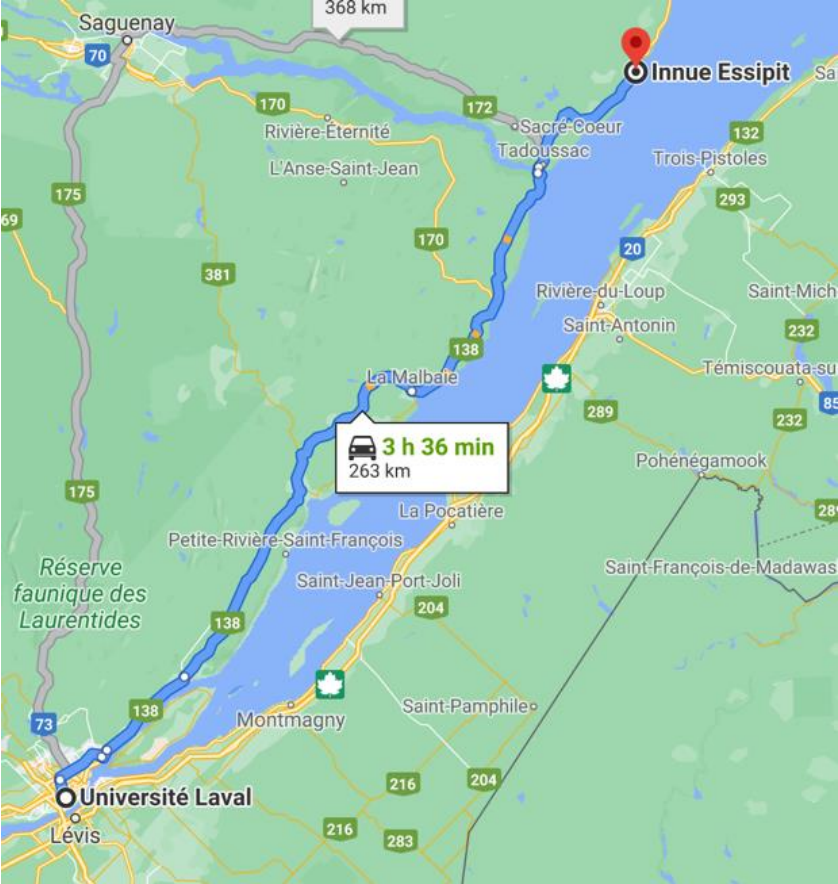
Essipit Innu First Nation

Spring
19

Summer
20

Autumn
20

Summer
21



<https://www.pcg.innu-essipit.com/>



Akumunan Biodiversity Reserve

Quebec's 2000-2002 strategy for protected areas

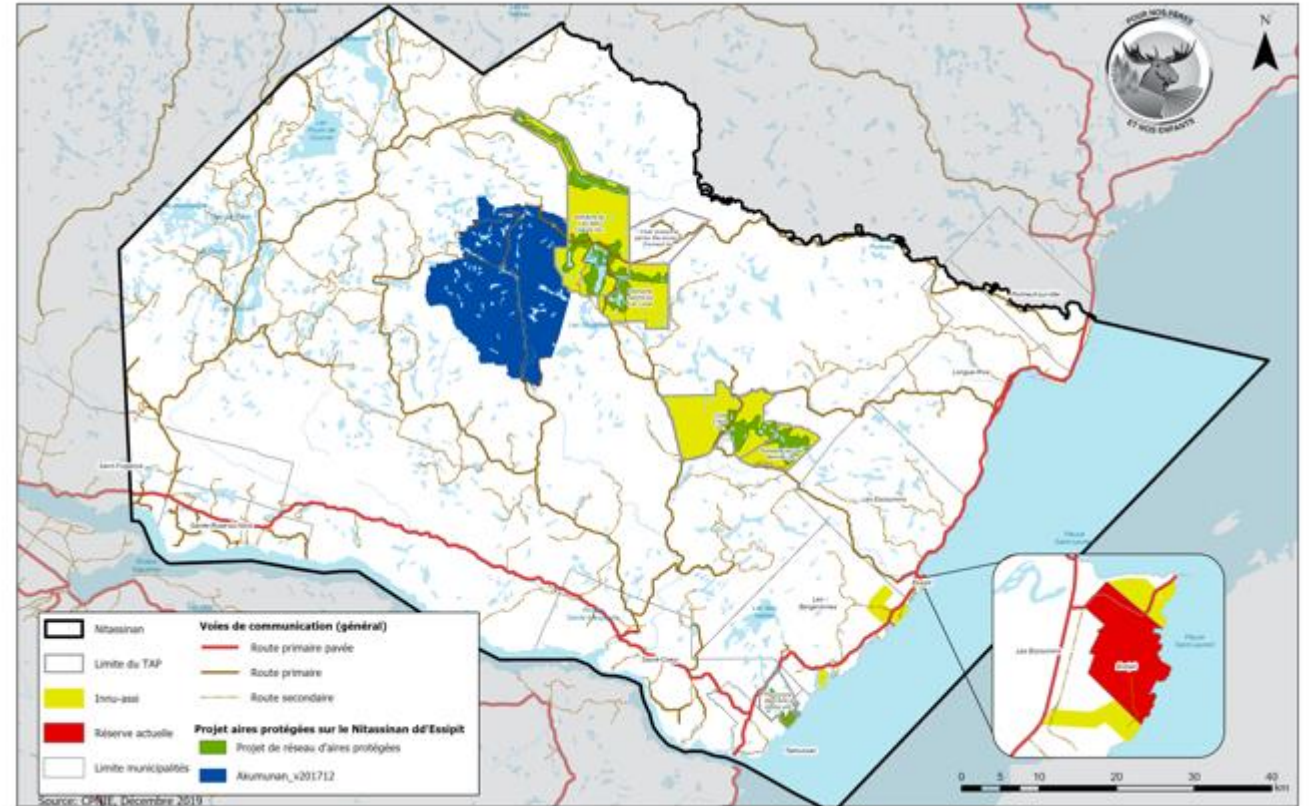
Creation : initiative by the PNIE (Essipit Innu First Nation)

Major objectives :

Protection face to territory invasion

Protection of representative pre-industrial forest territory

Protection of woodland caribou

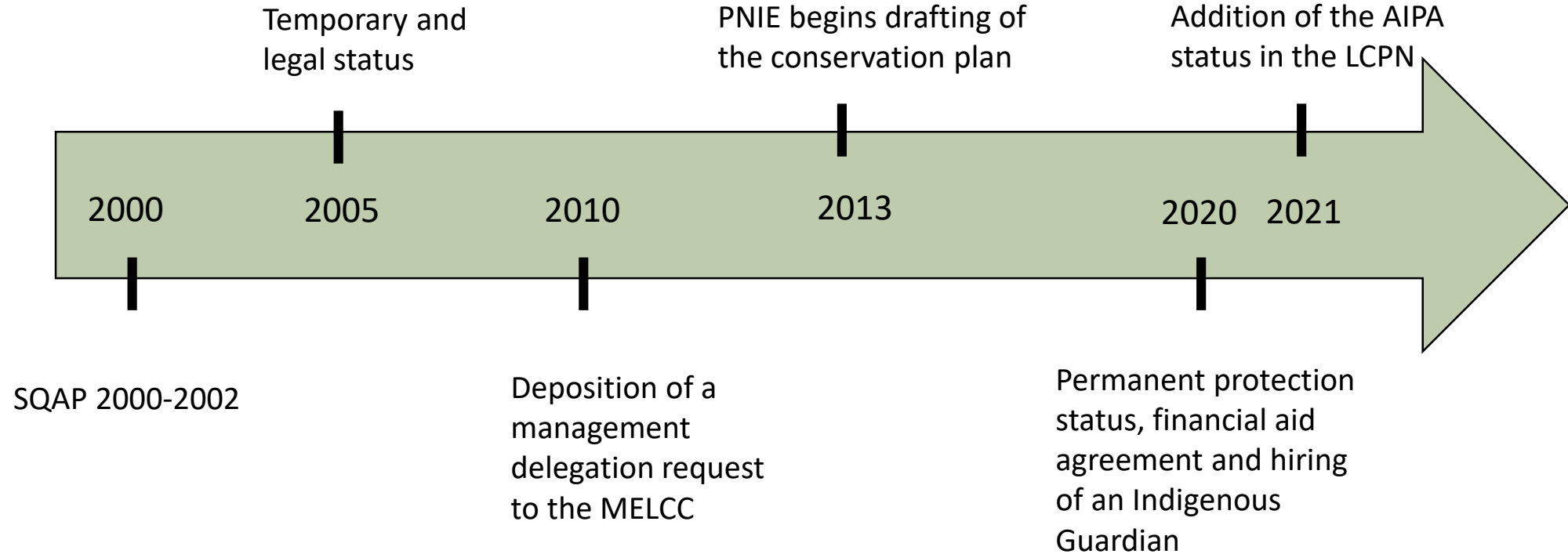


Total area : 284 km²

Conservation core : 99 km²

CPNIE, 2019

Biodiversity Reserve History





Activities realised on Akumunan





- Caribou telemetric monitoring (2004-2011)
- Closing of forest roads (2015-2017) (40km)
- Monitoring of caribou by cameras (2017-2020)
- Nesting boxes and analysis of fishless lakes for Borrow's goldeneye
- Archeological digs
- Surveying and denunciation of occupations without rights to the authorities

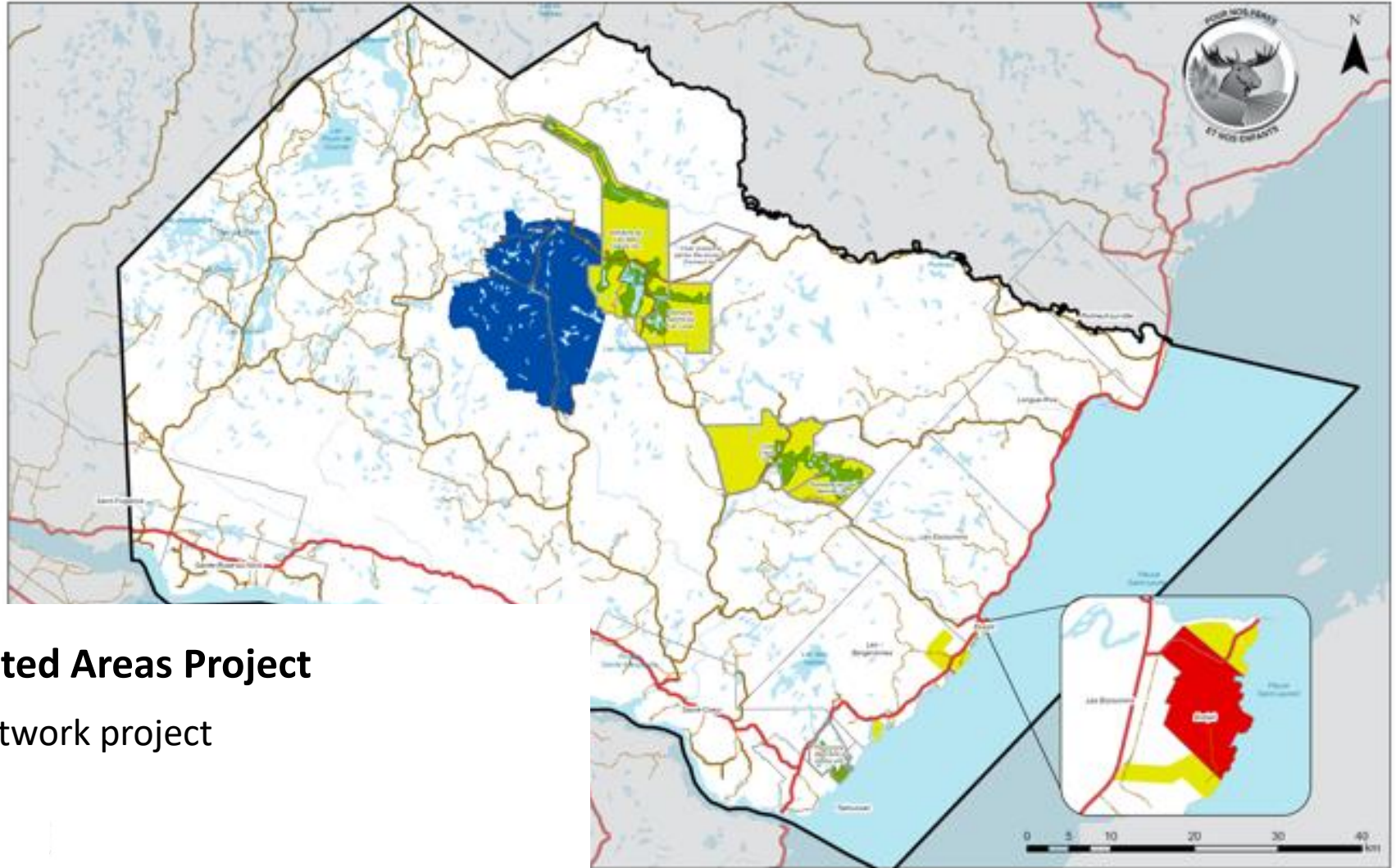


Innu-assi Management Plan

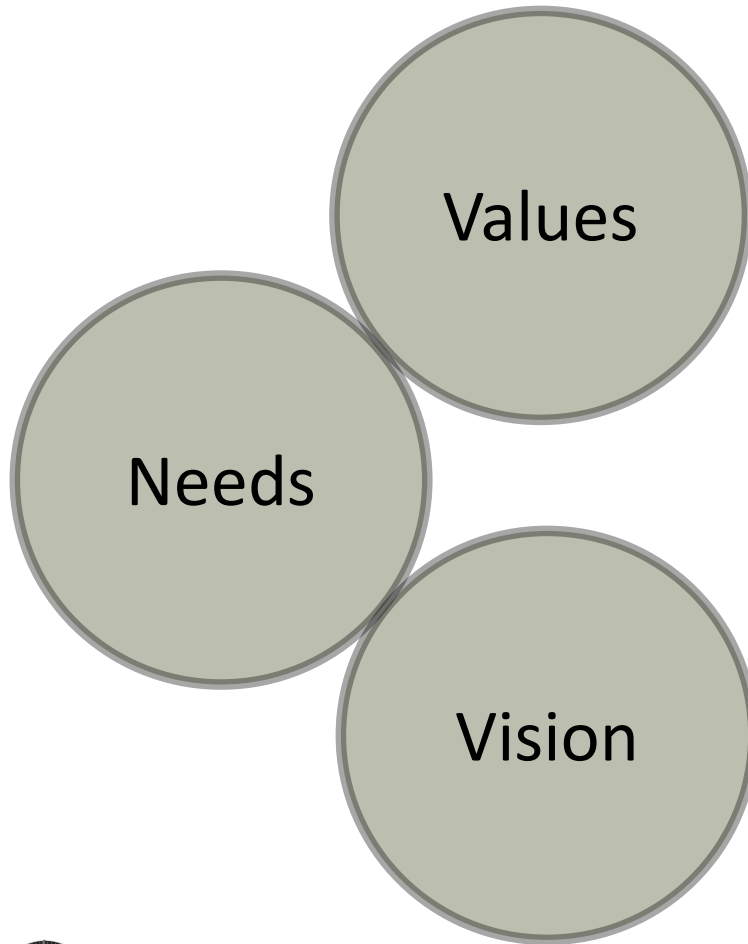
-  Innu-assi
-  Actual Reserve

Essipit's Nitassinan Protected Areas Project

-  Protected Areas Network project
-  Akumunan



How to develop the management effectiveness tracking tool?



La Table des partenaires

Chaire de leadership
en enseignement (cle)
en foresterie autochtone



CONSEIL DE LA
PREMIÈRE NATION DES INNUS
ESSIPIT



**Entente de collaboration¹ dans le cadre
de la maîtrise de Rosalie Champagne-Côté**
« Mise en place d'aires protégées autochtones : étude du cas des Innus d'Essipit »



Vice-rectorat à la recherche et à la création
Comité d'éthique de la recherche

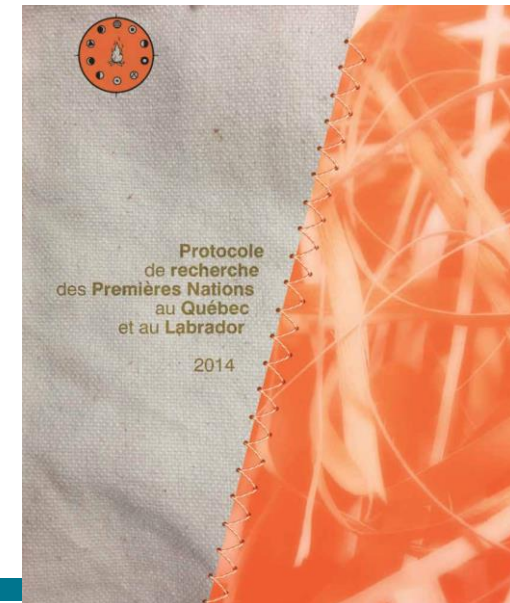
APPROBATION DE L'ÉTHIQUE

Projet de recherche impliquant des êtres humains ou
la consultation de renseignements personnels

Ce projet de recherche a été examiné en conformité avec les
Modalités de gestion de l'éthique de la recherche sur des êtres humains de l'Université Laval,
par le **Comité plurifacultaire d'éthique de la recherche**

Projet intitulé :

Mise en place d'aires protégées autochtones : étude du cas
des Innus d'Essipit



1st internship in the community

Spring
19

Summer
20

Autumn
20

Summer
21



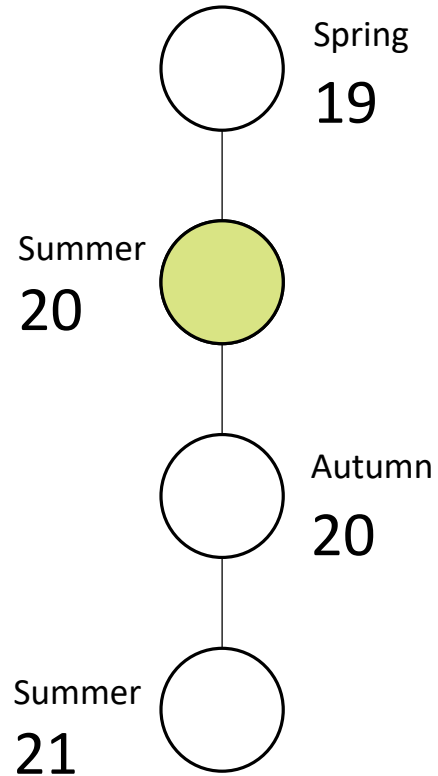
Journal HCN



(Video)

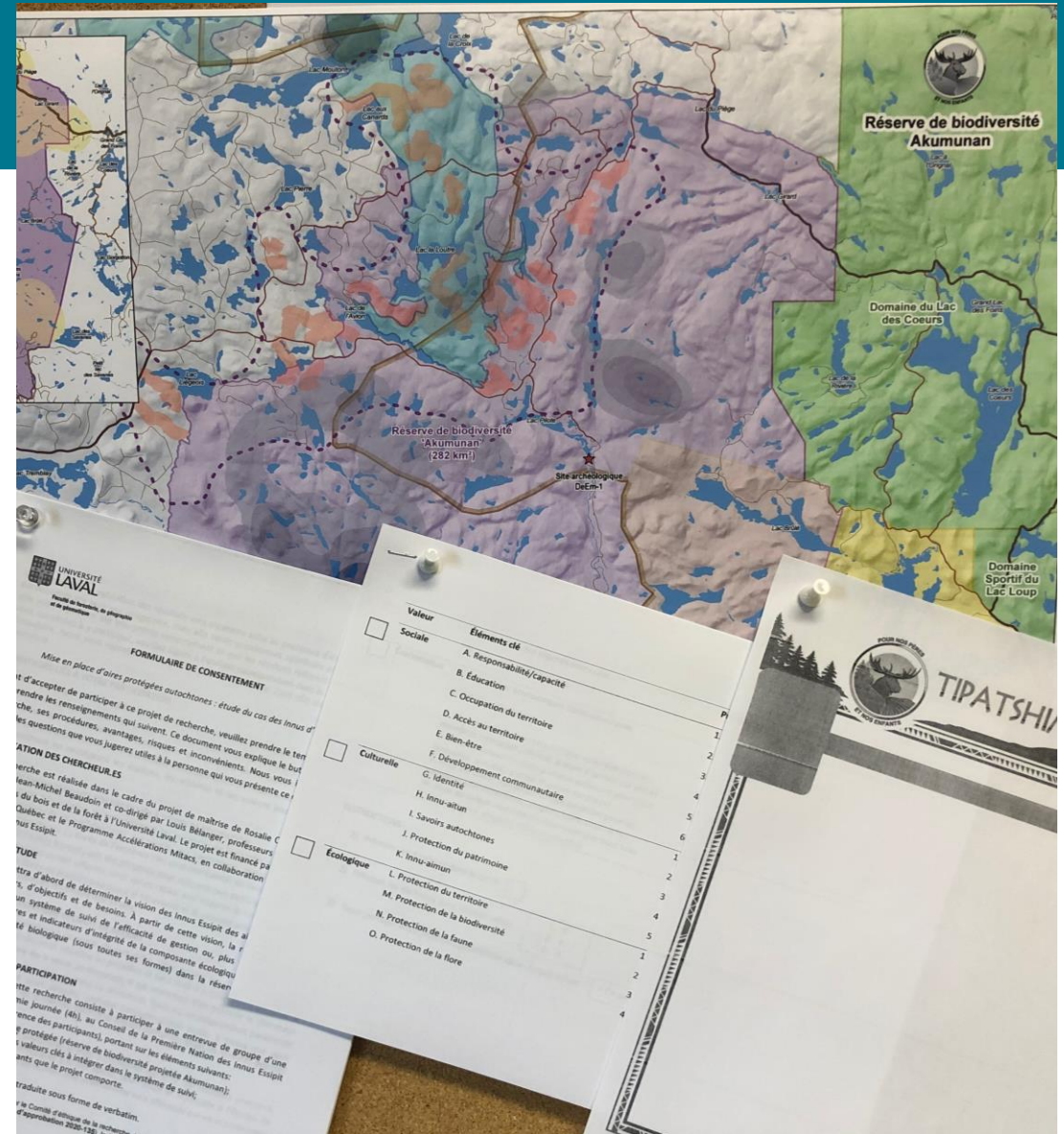


Focus groups



9 women
13 men

Knowledge of the territory, of practices and of Innu culture



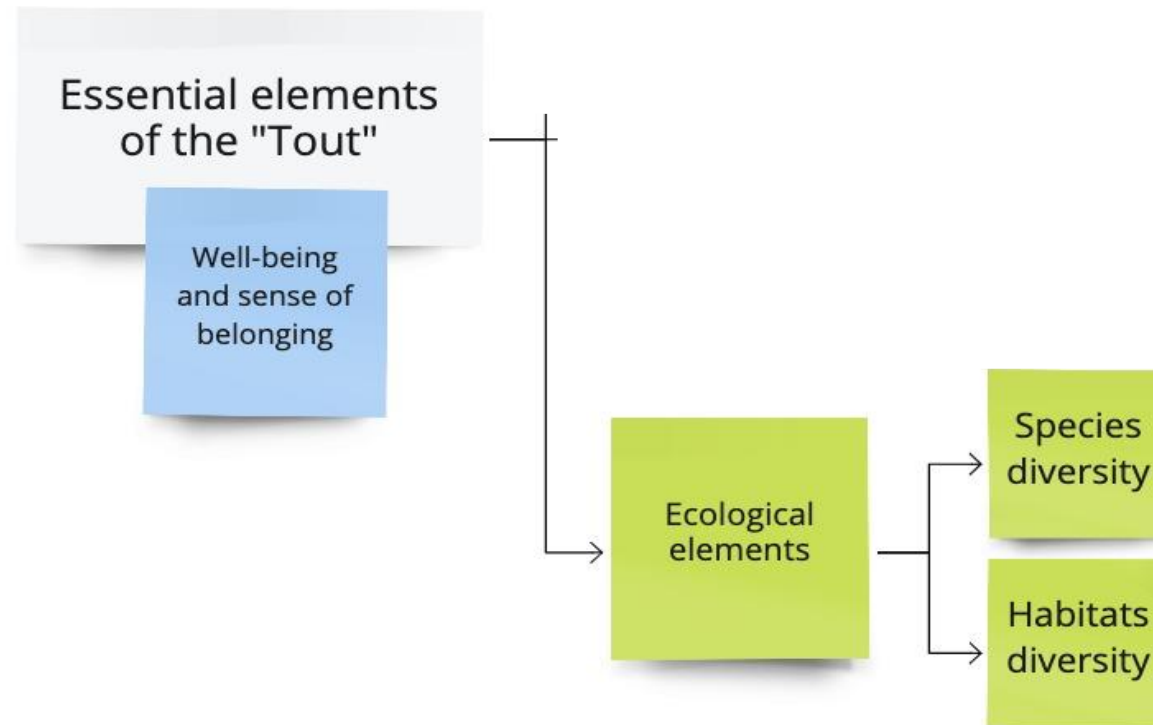
What are the elements to protect on Akumunan?

Essential elements
of the "Tout"

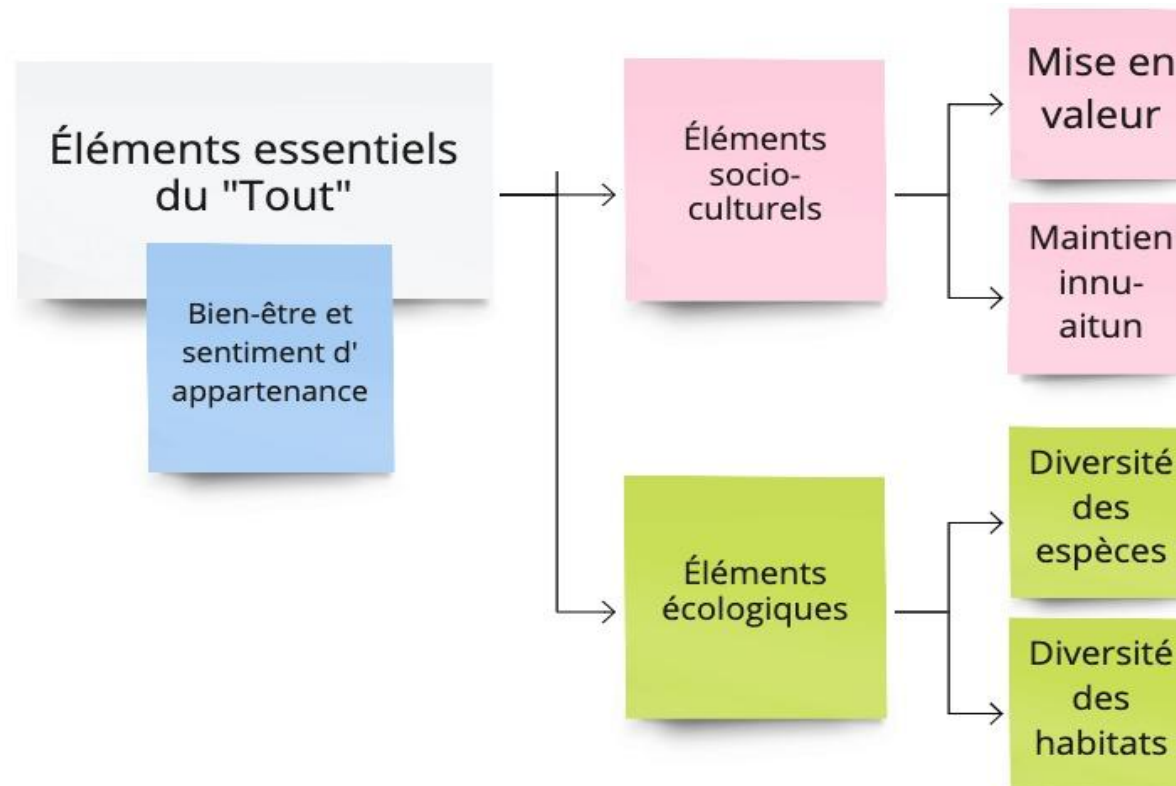
Well-being
and sense of
belonging



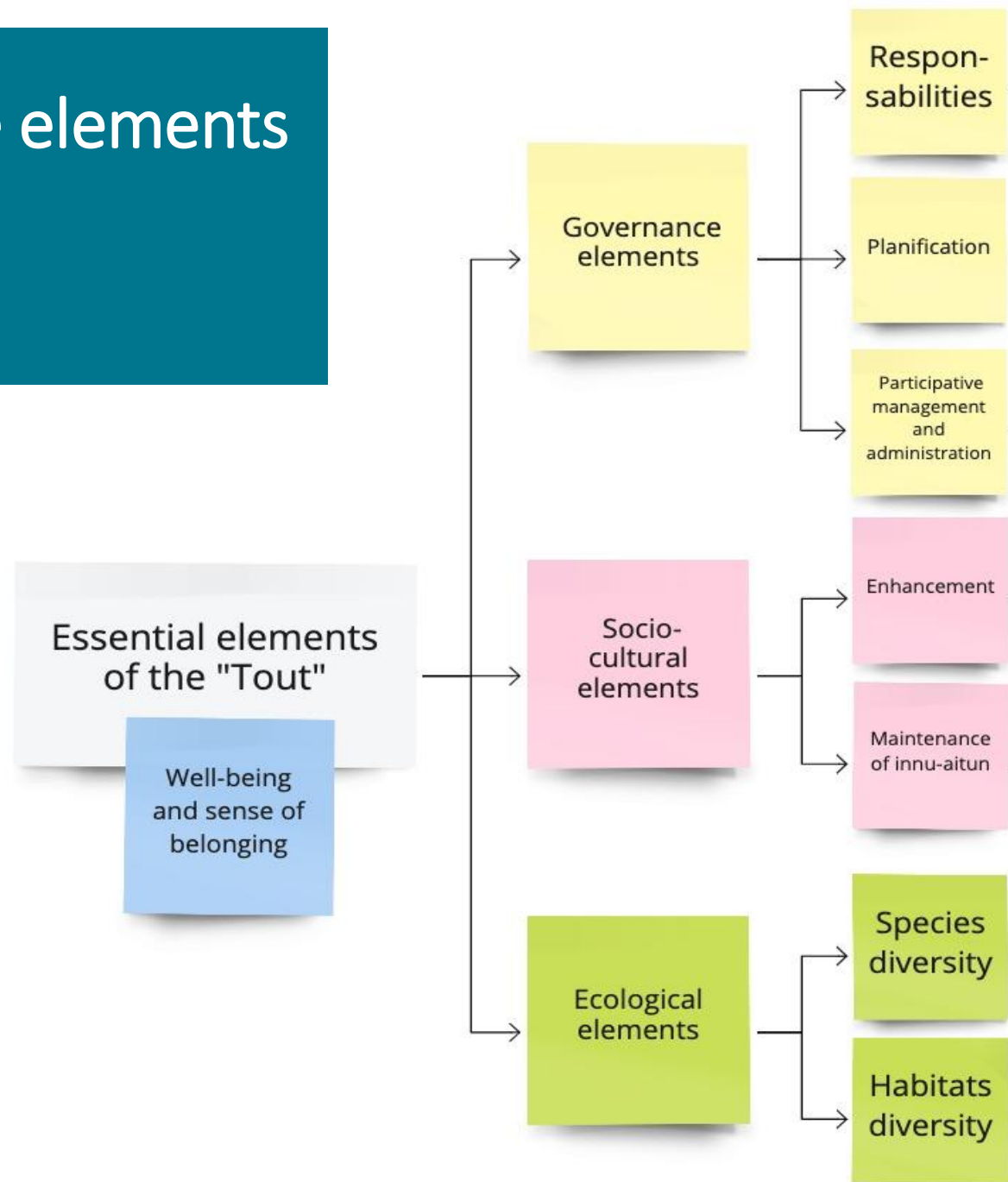
What are the elements to protect on Akumunan?



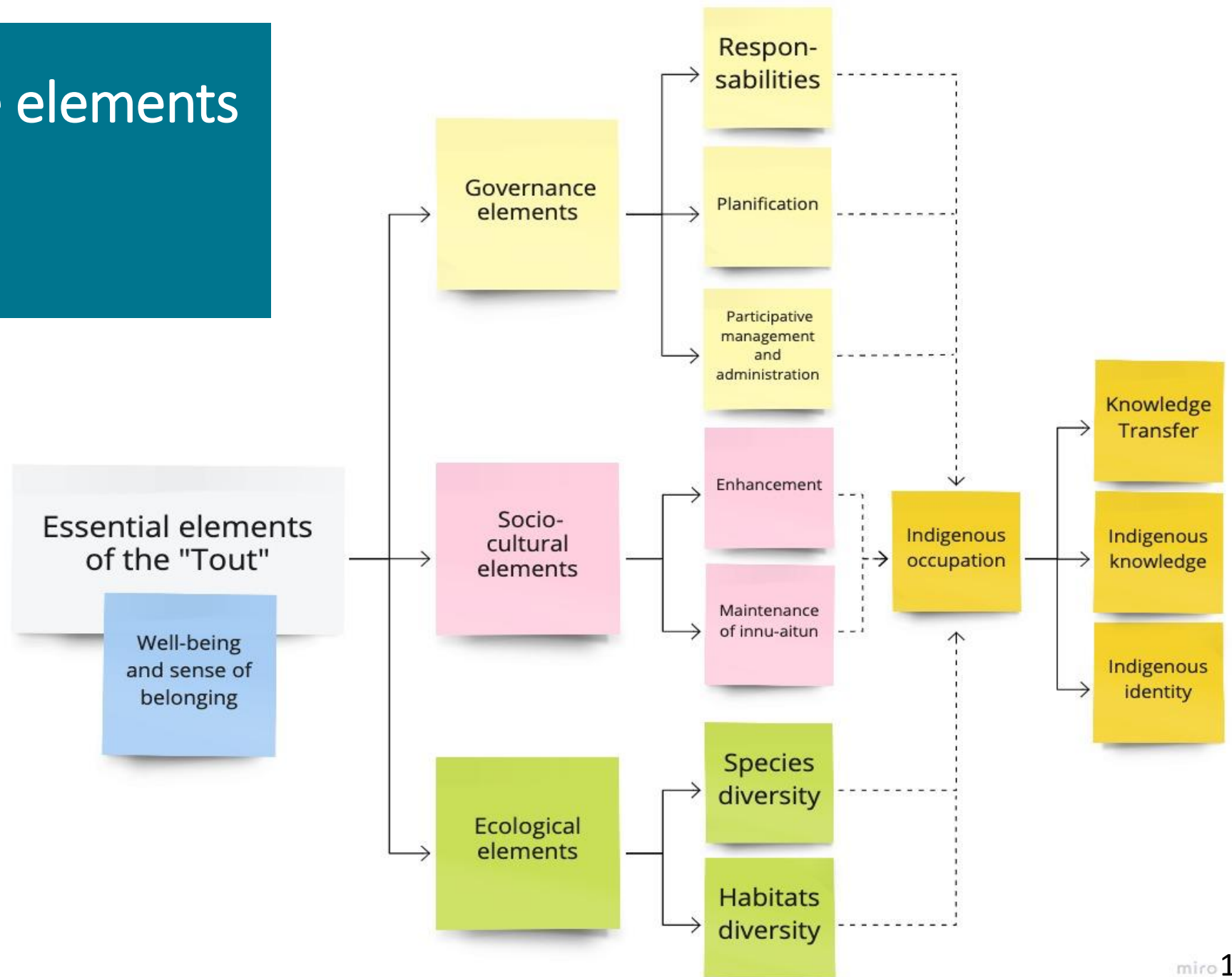
What are the elements to protect on Akumunan?



What are the elements to protect on Akumunan?



What are the elements to protect on Akumunan?



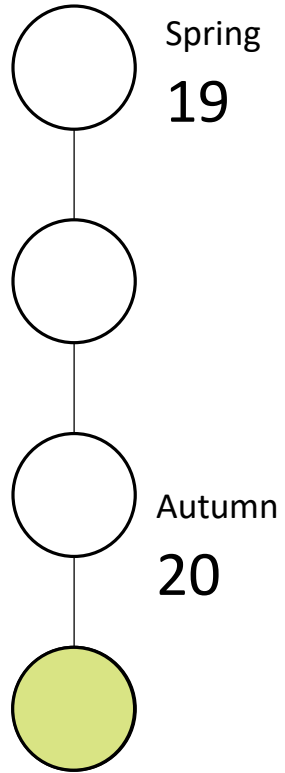
N°46 law Project modifying the NHCA

“12. Subject to section 97, the Minister may, by agreement, delegate to any person or to any Aboriginal nation or community all or some of the powers assigned to the Minister under this Act or held by the Minister with regard to the management of an area that is under the Minister’s authority and that is covered by a conservation measure under this Act.

“§2. — Aboriginal-led protected areas

“4.3. To allow for the conservation of elements of biodiversity and associated cultural values that are of interest to an Aboriginal community or nation on lands in the domain of the State, the community or nation may propose areas to the Minister to be designated as Aboriginal-led protected areas.

What's coming?



Internship II Essipit

Validation of results

**Transfer and mobilisation of knowledges by
educative material**

**Presentations to Essipit members and
scientific community**

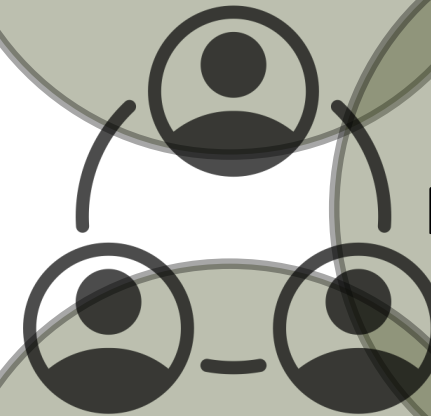
Initial deposit of the thesis



In conclusion...



Participatory
Observation



Focus groups

Documentary
research

Expected outcomes

Development of appropriate governance tools

Consultations with governance institutions

Outcomes for other communities wishing to develop protected areas projects



Thank you to our partners



La Table des partenaires

Chaire de leadership
en enseignement (cle)
en foresterie autochtone



Fondation
de la faune
du Québec

**Chaire Louis-Edmond-Hamelin de recherche
nordique en sciences sociales**

Bourses FRDF - Fonds de recherche et de développement en foresterie



Conseil de
**l'industrie
forestière
du Québec**



**Institut
EDS**

Institut Hydro-Québec en environnement,
développement et société
Université Laval

Mitacs

Vidéo et images :
Antoine Perrone
et Laurent Poliquin



Jean-Michel Beaudoin (Directeur)
Professeur Université Laval

Louis Bélanger (Co-directeur)
Professeur Université Laval

Pauline Suffice
Professionnelle de recherche Université Laval

Hugo Asselin
Professeur UQAT

Marc St-Onge, Kathleen Goulet et
Jessie Moreau
Secteur Territoire et consultations, Essipit

Marie-Ève Deshaies
Biologiste, Sépaq

Claude Samson
Spécialiste de la surveillance
écologique, Parcs Canada

Contact details : rosalie.champagne-cote.1@ulaval.ca